

Stretcher for hyperbaric use

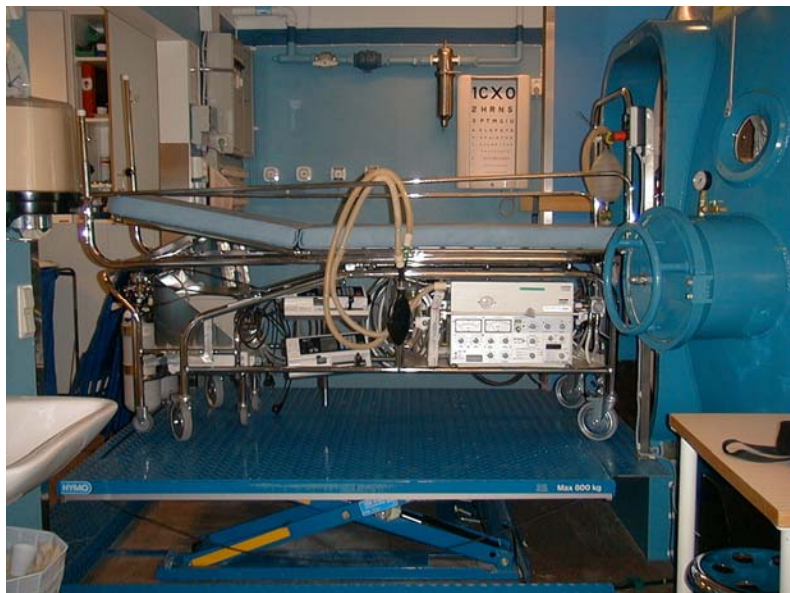
Introduction

A Hyperbaric Chamber with rectangular door, lifting table and the **Stretcher**, gives the staff a more comfortable work environment and the patient a safe transport into the chamber.

The **Stretcher** can be well adapted to its purpose, furnished with respirator, monitoring system, infusions pump etc. The docking trolley can be furnished with two separated 5-litres bottles, power supply unit and a battery back-up to supply a respirator and monitoring system. The trolley should be rolled on the ramp, and pushed against an attachment for transport into the chamber. After connection of equipments, the trolley are taken out of the chamber.

Design

The construction is designed in chromium plated steel, with a cushions for hyperbaric use. Head- and backrest are adjustable in steps with a control. In foot end there is a control for chock positioning of the patient.



Electric/hydraulic lifting table makes it easy to transport the stretcher in and out of the chamber.



Stretcher

- Wheeled with three braked link wheel and one link wheel with directional lock.
- Shelves for equipment.
- Elevating device arc in foot end for free mounting of equipments.
- Elevating device bars for I.V infusion bags.
- Protective grid bar.
- Cushion split in two section with card fillet.
- Ramp with attachment for trolley.
- Removable bed in two sections.

Trolley:

- Wheeled with two link wheel and two fixed wheel.
- Two rails with six ottoman wheel.
- Shelves for equipment.
- Carrier for two 5-litres bottles.